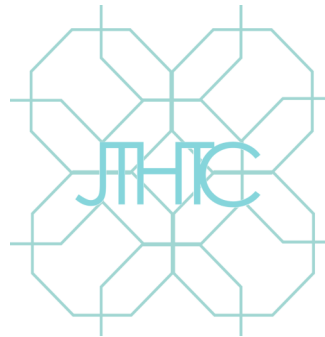




How to use The Five Elements with Flying Stars Feng Shui

Jannette Tibbs Holistic Therapy Connections & Magic Earth Mumma

Build and strengthen your knowledge of basic Feng Shui principles using the Five Elements and their associations. Study them before diving in to the Annual Influences Guide or study manuals, and you'll gain more from the information contained in the text, plus, you'll be better able to invent and construct your own solutions, to manifest smoother flowing energy in your home or business premises.



Published by
Jannette Tibbs Holistic Therapy Connections, 2019.
No part of this document may be reproduced
without the permission of the author.

Elemental Balancing is a process of using Shape, Colour and Sound representations to influence the unseen forces from our planet and our galaxy. These energies manifest from our buildings, the surrounding property and landscape as well as the passage of time through the seasons and the years as Earth orbits the Sun. Feng Shui utilises the connections and Qi Flow between the Elements to optimise the influences from the Place we inhabit (the land and buildings we live and work in) and the Annual and Monthly energy combinations that are moving over Time.

By using the Five Elements of the Wu-Xing; Fire, Earth, Metal, Water and Wood, we can gently create harmonious spaces, and we can quickly 'tweak' Qi Flow to elicit the kind of energy grid we need...eg: a work environment can utilise a lot more ambition related energy than a family home will want to.

I hope you'll enjoy the journey of discovering just how your décor and maintenance rituals can establish a more harmonious flow to life.

Why Elemental Balancing and not trinkets?

Flying Stars is useable for everyone regardless of belief system, because the elemental balancing can be utilised through any kind of cultural representation for interior decoration. Some of the best remedies and enhancements can be obtained by using plants and features outside the house. I do not find there is a need to use one set of 'cures' from one particular culture (or website).

FSFS uses Five Elements to bring balance to any space, taking in to account its general use and the appropriate dominant energy that is required, eg; a bedroom's dominant energy is calm, reserved, relaxing neutral with focal points of the appropriate Colour and Shape for the occupants' Ming Gua, yet a dining room is lively and busy requiring a more colourful palette that will suit all members of the family.

Flying Stars Feng Shui in its authentic form does not use an over-abundance of tasselled goods to invite in great energy or subdue unwanted influences...instead this art is one of utilising your own possessions and spaces, along with common-sense approaches to daily life, to provide you with great energy flow.

Encouraging High Quality Qi by keeping our property maintained and eliminating clutter is how we can make use of loved possessions and clean spaces to live and work in. *This* is 'good feng shui'. However, if you are quite attached to some gorgeous brass thingy with red tassels on it and you love it and adore it, then please do include it in your home and place it appropriately.

Using the Five Agents of Energy (the Wu Xing)

The diagram shows the relationship between the Five Agents of Energy.

The outer circle is natural/graceful Qi flow, a harmonious exchange; nourishing.

The inner star is controlled/forceful Qi flow, an aggressive exchange; destructive/cathartic.



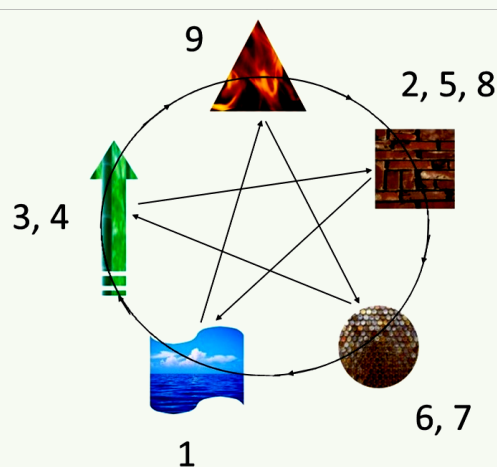
The Five Elements or 'Agents of Energy'

The Five Elements, or 'Wu Xing' helps us to understand the movement of Qi through these elemental representations.

The outer cycle is called the 'Sheng Cycle' and is harmonious, 'natural' and unforced. The inner star is called the 'Ko Cycle' and aggressive, 'manipulated' and forced.

Eg; Fire naturally nourishes Earth (think of the nourishment the soil gains from charcoal and decayed matter), but Fire also 'destroys' Metal by melting its form.

Wood nourishes Fire naturally, yet it is manipulative towards Earth energy...think of the root system of a tree and how it pushes soil out the way and takes energy from it in the form of nutrients.

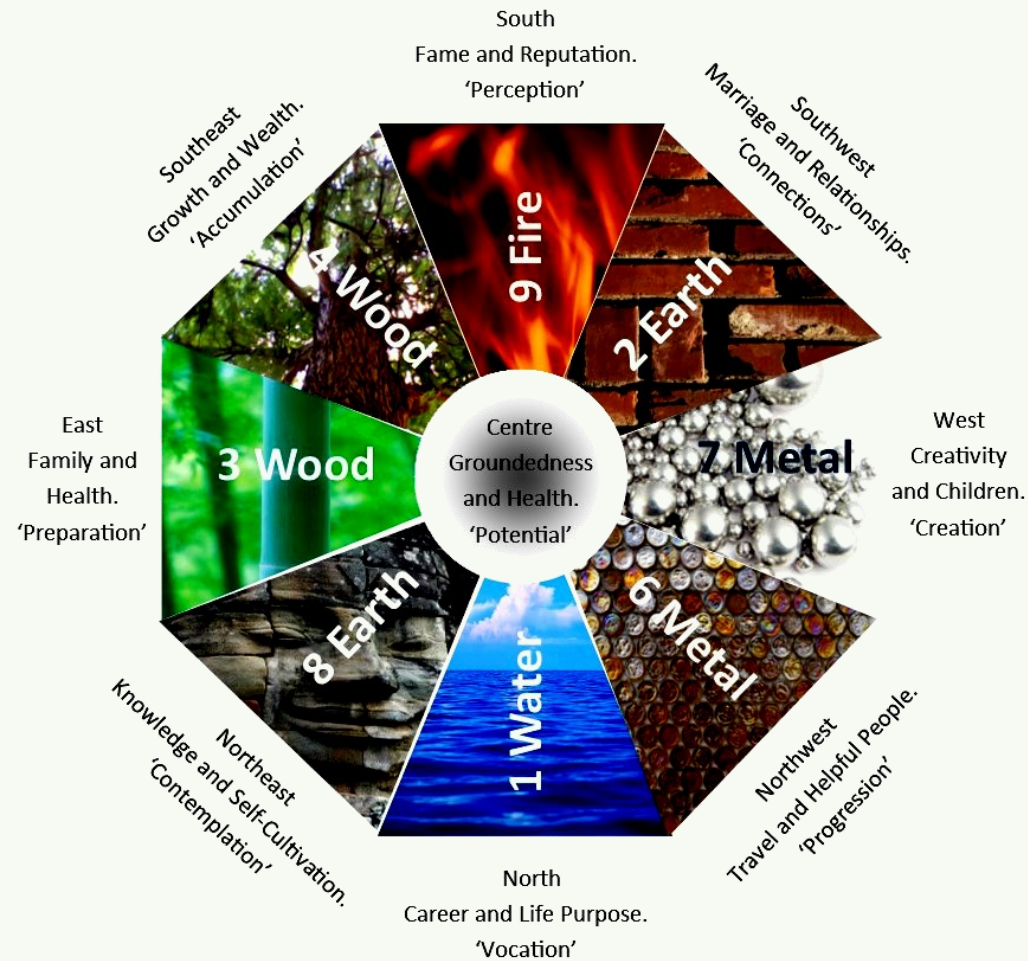


I encourage you to become familiar with the Star numbers and their elemental associations so that you may have a go at elemental balancing in your spaces this year with 'understanding', instead of just doing as directed.

Water Star 1	Dark Blue / Black	Wave-like, swirly	Liquid like surfaces with high gloss shines, wavy patterns in soft furnishings.
Wood Stars 3 and 4	Light Blue / Greens	Columns, lines, tall reaching	Highlighted columns in a room or building's structure, tall stemmed plants, etc.
Fire Star 9	Reds / Pink / Purple / Orange	Star-like, Triangular	Fire coloured flowers or foliage, soft furnishings, feature walls, etc.
Earth Stars 2, 5 and 8	Browns / Yellows	Square, Cubic, Rectangular	Square tiles, rectangular pavers/bricks
Metal Stars 6 and 7	White / Silver / Gold / iridescent / pearlescent	Rounded, Globular	Bells, Piano, Gongs, Metal chimes

The Bagua and The Five Elements

This is the base grid of the Earth's energy chart, 'The Bagua'. It represents the underlying energy emanating from each direction and occurring 'in' each area.



The Centre has no Element but is the **Star 5 'Void'**, a pure energy of potential

Deflecting Negative Energy from Star 2 & 5

The Sound of Metal: The resonance of metal upon metal, stone, wood or other strike surface.

One of the easiest and most potent environmental balancing agents is The Sound of Metal. Easy to install using a metal wind chime or decorative string of bells that will catch the wind and 'sing'. You can also choose to play a recording of metal sounding music (piano, tribal/ambient bells and gongs) in an area that needs it. This deflects the low level influences from Star 2 and 5 (these, like all influences, have positive aspects too) and promotes beautiful soundscapes in your spaces.



The Wealth Bringer Bowl: Still, clean water in a round metal bowl.

Uses the Shape and Colour of Metal as well as the physical still water. Placed OUTSIDE the building in the direction that Star 5 is coming from so that it deflects the potential before it can enter the building. Keeping the water clean is essential. Change it each day or two and use the water for plants. If you are inclined, add a drop or two of Lemon, Sage, Thyme or Lavender to the water to give it an extra cleansing boost. Alternatively a sprig of Rosemary, Holy Basil or White Sage in the water. As a devotional focus you could give this bowl fresh flower petals and leaves each day to



beautify the feature. The water for this remedy must be *still*; not part of a reticulating water feature or a pet's water bowl.

The Salt Water Cure: Still pure water with sea or rock salt in a round vase or jar, with or without six metal coins.

Uses Shape and Colour of Metal as well as the purifying qualities of salt water to deflect the negative influences of Star 2 (or 5). To set up, fill the vase 1/3 to halfway with salt and add the water to the top. If you are using coins, add them on top of the salt before adding the water, in a circular pattern. It is great for computer work stations as the negative ions from the salt water counteract the overproduction of positive ions from electrical appliances and especially computer screens. (plants like Spider Fern and Boston Fern, Rubber Plant and even the humble 'Lucky Bamboo' are good for this) After some time the salt crystallises around the rim of the vase creating a salt lace effect which is very pretty and indicates that the salt is reacting to the atmosphere in the immediate vicinity. If you are unable to use a SWC, use a beautiful metal bowl like the one shown here.



Elemental Balancing

Metal: Nourishes Star 1, Supports Stars 6 & 7, Weakens Stars 2 & 5

To deflect and subdue the Star 2 and 5 negative influences when a Salt Water Cure or Sound of Metal is not appropriate, or to boost the influences of Star 6, 7 or 1. A business can require totally different balancing to that of a family home so it is important to view the dominant energy required. Metal is not only White, Silver or Gold etc...but can be iridescent like Mother of Pearl or dragonfly wings. Get creative with your elemental balancing.



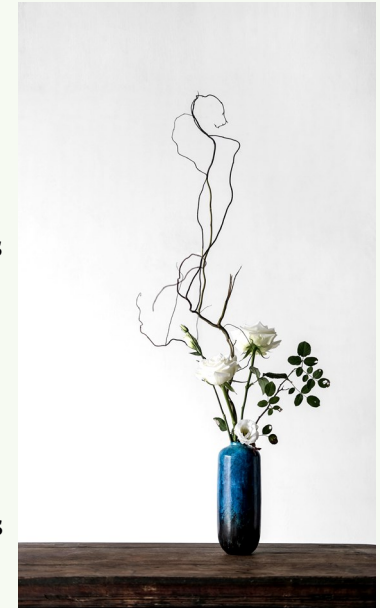
Water: Nourishes Stars 3 & 4, Supports Star 1, Weakens Stars 6 & 7

(Shape and Colour only, NOT physical running water) to deflect and weaken the negative influences of Star 6 or 7, or combinations of them, which is called 'Clashing Swords' and has the potential effect of promoting conflicts, fighting, arguments and even physical confrontations, as well as simple to major injuries from metal objects. Placing the Colours of Black and Dark Blue, with Shapes that are Wavy and Irregular will deplete Metal influences. Long curtains in the Water colours immediately transform the energy of a



room, or use a floor rug with a pattern and colour to imitate Water.

Wood & Water Combinations: used to distract the energy of Star 6 and 7 as detailed previously. Using a tall or column like vase in blue hues with tall foliage plants like Peace Lily can easily establish this remedy. This can also be used to smooth the energy of Star 3 and 4 to be utilised for their Ambitious and Competitive influences in a business setting. Mix and match Wood and Water colours with Water shapes and create striking focal points.



Wood and Fire: use to soften energy for Star 3 and 4, but still utilise the positive aspects of each influence. Tie a Fire Colour ribbon around a tall vase of foliage plants that 'reach upwards', or have a 'starburst' formation like these wind flowers in a green vase. You can also make a more permanent statement by using a red foliage plant like Dracaena or Rubber Plant in a tall column vase of Wood colour; Light Blue or Green.



Fire: Nourishes Star 8, Supports Star 9 and Weakens Star 3 & 4.

To burn up negative influences of Star 3 or 4. It can be applied as Pale Fire or Beautiful Fire in the form of cherry blossom or lotus bloom, floating roses or floating candles. Using these gentler hues in our furniture with soft fabrics really helps to make it a quiet and calming influence. To make a bolder statement use representations of Fire Colours; Red, Orange, Purple or Pink, with Fire Shapes; Triangles, Stars. A string of Fire coloured fairy lights can bring bright happiness into a room and its much safer than using candles, which, unless there are a profusion of them, make for a very weak Fire element. Using a simple and moveable item like a stunning lamp in Fire shape and colour is a good way to 'inject' your space with the influence of Fire.



Earth: Nourishes Stars 6 & 7, Supports Stars 2, 5 & 8, Weakens Star 9.

Used to enhance and stabilise the Star 8 influence, which is the Wealth Star this 20 year Period. Grounding can be accomplished with medium to large statues of wood and stone in brown and earthy tones. Earthing a space can be very helpful if the family has recently moved in, or if they have had lots of busy travel in life. It can establish a feeling of connectedness and peacefulness.

You can also use Earth element if the architecture of the building has lots of 'sharp' edges indicating too much Fire element...Earth can smooth this out and help humans and animals feel more relaxed in a space.



The Wealth Star

The Wealth Star is the Ruling Influence for the 20year period and from 2004 to 2024 it is Star 8. Wherever you find Star 8 on your property's chart you may be able to use it for activating wealth opportunities. Consult your AIG for the appropriate year and locate the Annual Wealth Star and then the Monthly Wealth Stars.

You can install a water feature indoors or outdoors and leave it running to activate your Wealth Star all year long. An indoor desktop water feature can be moved around to take advantage of the Monthly Wealth Stars too.

A solar powered filter pump or bubbler is a great investment for activating the Annual Wealth Star, and the pot or fountain can be moved around next year to take advantage of the next placement of the Annual Wealth Star if you have only recently moved into your building or if the building is very new.

Preparation of the area is key as well. Invite in the BEST possible wealth opportunities by establishing the highest quality energy in the area. Remove broken things, clean up, and make it beautiful.

If you are accessing it from an indoor area only you can use symbolic representations like a Vision Board to identify what wealth is to you and what you would like to manifest this year. A holiday? A catch-up

with friends far away? Significant improvements in health & fitness? Get it up there on the wall and get focussed. Universal energy is primed to respond and the Star 8 is a great conduit for it!

This kind of water feature combines Earth in Shape, and the Fire of a floating lotus bloom. Perfect for supporting and nourishing the earthy Star 8. Get this in a red, purple or terracotta and boost the Earth element even more.



Space Clearing and Energy Maintenance

A Space Clearing Ceremony establishes a new layer of energy in your building and clears away unwanted frequencies that may be collecting low level energies from incidents, arguments, problems, accidents and the like. Getting rid of these layers is like inviting in a breath of fresh air to your living and/or working spaces.

Preparation:

Clean spaces and places physically with safe and non-toxic cleaning methods. Water and microfiber cloths are ideal, and for harder to shift dirt use a simple soap or bi-carb soda and rinse well.

De-clutter your immediate living areas—bedroom, kitchen, office, lounge. Get rid of things that are unused, unloved, not appreciated and just taking up space. These things literally 'bring the energy down' by their existence in your home or business.

Set your main intention for this Clearing and write it down. "This space supports and nurtures me and my family", "I invite and accept only Prosperity Success this year in my business", "Everything I do has Purpose and fills my Life with Joy and Abundance".

Timing: Use the natural energy of the Waning (reducing) Moon so that your efforts are supported. View the AIG Calendar to find the 'Last Quarter' symbol to help you plan your Space Clearing for optimum effect.

Performing: Set around 2hrs aside to complete a Space Clearing, as it is helpful to meditate quietly before and after. Set your intention by opening up all the doors and windows, lighting a candle or two and some incense if you like. Quietly prepare yourself. Ask your guides and Beings of Pure Light Energy to protect you as you clear away any negative or unhelpful influencing energies from your spaces. Ask for assistance to invite in all High Quality Qi to move into your home and assist you with your endeavours in Perfect Ways.

Move around your home with a bell, a smudge-stick, clapping your hands, reciting a mantra and/or using Reiki energy, giving attention to all individual spaces. Spend a few moments each circuit to feel the level of energy. Is it sparkingly light or heavy? This will tell you whether a space needs more attention.



Completion: Give thanks for the protection and assistance received during the Space Clearing. Sit quietly and feel the new layers in your home. I enjoy a quiet meditation before blowing out the candles or removing the spent incense.

Space Clearing allows new energy to flood in and it moves the Qi around. It is very helpful for everyday life, or for when illness, depression or lack of motivation is evident. 'Sprucing up the Place' takes on a whole new meaning when you are involving space clearing techniques each week. The layers of fresh energy bring good health, increased wealth opportunities and more harmony to your life.

Other Tips:

The energy of retail spaces can become stale and unfortunate, and in cases like this a large scale shake up is needed. Re-arrange stock, remove things that aren't selling, and re-energise with new product lines. Physically clean the premises and put in place any Annual remedies that you can. Consult an expert about up to date trends for your industry and take advice. Fresh eyes see so much more!

Energetic Maintenance is about observation and being conscious of happenings. If there are more accidents and arguments than usual—do a space clearing of some kind.

You can do a clearing as often as you like, or feel you need to. A quick energetic cleanse via opening the windows and doors and vapourising a sacred oil, lighting incense, or spritzing with a Space Clearing Mist, will work wonders for establishing beautiful Qi and uplifting the Spirit.

A simple action, like mopping with a cleansing essential oil, can dramatically lift the Qi of a home and turn around a family's relationships.



Symbolism in Elemental Balancing

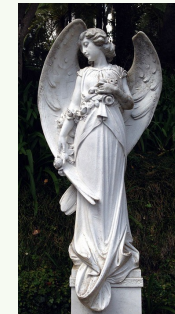
The Calabash or Golden Gourd (Wu-Lu)

A powerful symbol of medicine and healing, the Calabash was a dried out gourd used to carry therapeutic herbs and plants. The Metal Element shape of them being globular and curvaceous, as well as being that golden colour made them perfect for symbols to ward off sickness and illness often associated with Star 2. Star 2 is also a potentially nurturing influence as well...all energies have two manifestations.



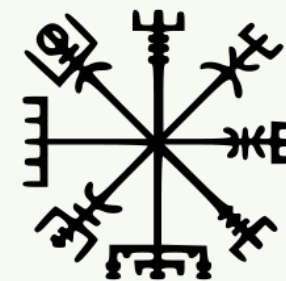
Statues or Pictures of Divine Beings

Imbuing a space with divine connections brings a peace and tranquillity, as well as a big personal connection to that is unlike anything else because it is tied to your Human Qi and your Perception of the object. It is lovely to make a special space, a kind of alter or display, with your divine representations and spend time in contemplation with it. I have been working with Runic symbology (sigils) and find that drawing these or having them on and around my workspaces extremely effective.



Powerful Glyphs

OM from Sanskrit is a representation of the sound at the beginning of the Universe. It holds a visual frequency of calm, power and peace. The symbols of Vegvisir from Nordic traditions invokes an energy of protection for people to navigate rough energy in travels or in times.



Crystal Therapy

Clear Quartz

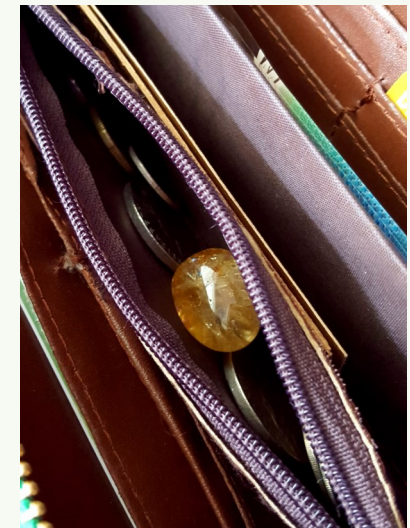
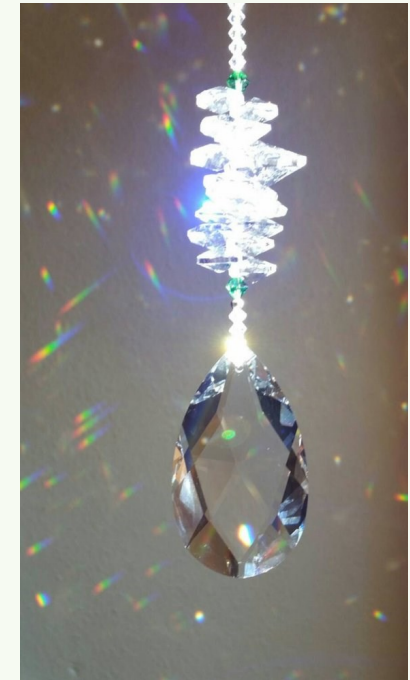
An 'amplifier' of energy, the Clear Quartz is used most often to clear and 'blast' light into a space. The refraction of light-waves through the crystal results in a beautiful spectrum/rainbow being shot around a room. This is symbolic of us being opened up to new dimensions and new aspects of anything. It gives us 'full spectrum sight', and thus more Clarity of a situation.

Black Tourmaline

A Protection stone that forms a 'force-field' around the aura of all living things and naturally transmutes negative or low-level Qi into positive high level Qi. It is the ultimate Grounding stone as well and excellent for quieting the Heart-Mind connection in readiness for contemplation, concentration or meditation.

Aventurine and Citrine

Both used to promote good Wealth energy, the Aventurine is called 'The Merchant's Stone' and is helpful to attract commerce. Citrine is a cleanser and amplifies growth energy. It does not need cleansing or clearing and is helpful to put a small stone into your wallet or purse to cleanse the energetic frequency of money within it.



Number & Element	Colour & Shape	Sector/ Direction	Personality	Element/Landscape/ Season	Physical Association	Energy Description
Star 1 Water	Black, Dark Blue Wavy shapes	North	Middle Male	Water Winter	Kidney, Ears, Blood, Sexual Organs.	Wisdom, Ideas, Expression, Danger
Star 2 Earth	Yellow, Brown Cubic shapes	Southwest	Mother Mature Female	Earth Late Summer	Abdomen, Stomach, Spleen	Receptive, Nurturing
Star 3 Wood	Light Blue, Light Green Tall, Column-like shapes	East	Elder Male (eldest child or uncle figure)	Thunder Spring	Feet, Throat, Neck, Liver	Startling, Arousing, Competitive, Ambitious
Star 4 Wood	Dark Green Tall, Column-like shapes	Southeast	Elder Female (eldest daughter or aunty figure)	Wind Late Spring	Thighs, Elbows, Hips, Nerves, Digestive Tract.	Romantic, Academic, Sensual, Unscrupulous
Star 5 Earth	Yellow, Brown Cubic shapes	Centre		Earth		The Void Potential, Change
Star 6 Metal	Silver, Gold, White	Northwest	Father Mature Male	Heaven Late Autumn	Head, Lungs	Leadership, Authority
Star 7 Metal	Silver, Gold, White	West	Young Female	Marsh, Lake Autumn	Teeth, Mouth, Chest, Thorax	Pleasure, Joy, Destruction, Speech
Star 8 Earth	Yellow, Brown Cubic shapes	Northeast	Young Male	Mountain Late Winter	Hands, Fingers, Back, Nose, Bones	Stopping, Resting, Strong, Still
Star 9 Fire	Red, Orange, Purple	South	Middle Female	Fire Summer	Eyes, Heart, Spirit, Breasts, Blood	Clarity, Beauty, Warmth, Perception

The table shows the common associations of each Star starting with its Element and moving through the colours, shapes, personality, nature and season, body area connection, and the actual influences connected to each of the Stars.

By understanding these connections you will be able to fine tune elemental balancing, sector maintenance and subtle changes pertinent to each season, along with your usual Feng Shui awareness. But the best application is when there is a physical symptom that you can relate to the Stars affected, and then implement changes to bring the Qi up and eliminate the low level energy, to promote repair and healing.

Your Ming Gua and how to use it

Each person has a unique energy that is implied from the time they were born, the date and place (Earth Qi). It is also derived from their genetic material given by each parent (Human Qi), and other intangible forces we may not yet fully comprehend (Heaven Qi). This combination is known as The Cosmic Trinity; Earth, Human & Heaven, and is applied in other areas of Flying Stars Feng Shui. (FSFS)

In FSFS, this particular personal energy is referred to as your Ming Gua (or Pa Kua depending upon which dialect your tutor was familiar with). If you apply your Ming Gua to the Annual and Monthly Ruling Star influences, you can determine whether you will be directly benefitting from, or in a cycle of discomfort with, that energy combination.

Flying Stars can seem overtly complicated, so it's important to 'break it down' into bite-sized portions, and just try a little at a time. After a little while, your study of the Nine Stars and their associations will form a picture in your mind, similar to getting to know a person.

When you feel confident that you've memorized enough of the Star's personality, it's easier to apply the theory to situations, like using your Ming Gua with the Annual and Monthly Star Charts.

Calculate your Ming Gua / Kua

Add the last two digits of your birth year eg: 1971 is $7+1=8$

Males: Subtract the number from 10 and you have your Ming Gua

$$\text{eg: } 10 - 8 = 2$$

Females: Add the result (eg: 1971 is $7+1=8$) to 5 and you have your Ming Gua,

$$\text{eg: } 8 + 5 = 13, \text{ so reduces to a } 4$$

If your number reduces down to a 5, you'll need to use the rule to allot it to either a 8 for Females or an 2 for Males...

NB: if you were born in late January or early February you will need to consult an Ephemeris chart to find when the Sun is 15° into the sign of Aquarius which marks the beginning of the Solar cycle for that year. I have used Astro.com when needing to know if someone was in the 'previous' or 'current' Year. Usually you can track it to February 5th as the beginning of the Solar Cycle.

Please note that Flying Stars uses the Solar Cycle to track influences and not the Luna Cycle which is used in traditional Chinese Zodiac readings.

There is much more to offer with investigation of your Ming Gua birth number. Module 2 contains a heap of information for you to utilize. Available to order from the website at

MagicEarthMumma.com

Main aspects to consider each year in relation to your Ming Gua...

- Which sector is the Annual 'home' of your Ming Gua number.
- Which Star flies into the sector of your Front Door, Bedroom and / or Home Office or space at your property that you spend the most time in each day.

Then it is a matter of asking "How does my Ming Gua interact with that Star Influence?". Is it a harmonious and nourishing combination, or a forceful combination that weakens or pushes it into action. In each case you apply the suggested Elemental Balancing (Remedies) to the area in question. I've written up a few examples on the next page for you, to give an idea of exactly how I would go about doing this...

Example 1:

My Ming Gua is Metal 7 and I find that my bedroom in the North of my house will have the dominant Monthly Star for February as Star 7 as well! This means that my personal energy is supported. The North is associated with Star 1, and the Element of Water. As Metal energy nourishes Water energy I may wish to nourish my Metal 7 energy with earthy tones and shapes in my bedroom décor.

As this energy supports the use of speech and divination too, I can schedule more time to dedicate to myself for directed meditations, journaling, creating appointments for public speaking (workshops,

talks, meetings) and oracle cards or similar. As this energy is the energy related to Joy and Pleasure I can focus on the things that bring me those experiences and schedule in as much time to enjoy these Life Experiences, knowing that the natural energy is supporting such endeavours. Alternatively, if I know there is something in need of repair or cleaning, I can make sure to do these jobs and in so doing, avoid any of the negative associations of Star 7 which can be destructive to health, wealth and happiness.

Example 2:

My child's Ming Gua is Wood 3 and they sleep in the East room of our home which is also the Bagua Trigram 3. This generally supports them, but the Annual Ruling Star for the East is Star 9 Fire. This will 'burn up' the Star 3 energy. To nourish my child and promote good sleep I can implement more Water Element in Shape and Colour which will nourish her Ming Gua and balance the Fire Star 9.

Because the energy of Star 9 is clarifying my child may experience a mild infection with a temperature, but if the energy of the room is high quality and maintained with 'cooling' agents (like Lemon, Basil & Frankincense oils, Rescue Remedy and fresh air) they may manifest a self-clearing and achieve a higher state of health soon after by removing an existing condition or finding an overall change in mindset or behavior.

Example 3:

Star 5 is flying in to the sector of my front door and I my Ming Gua is Earth 2. I'm concerned that the combination of 5,2 is considered unfortunate and wish to have a trouble free year. All remedies point to implementing a Sound of Metal cure, but that will weaken my Ming Gua.

In this instance, yes, I will still need to put the Metal cure at my front door outside as it is imperative to calm the Annual Star 5. I can nominate another entrance door as the 'front door' for the year and keep the other one as quiet as possible of day-to-day Human Chi. Secondly, I can boost the energy of the Earth Element in my bedroom and my office space where I spend most of my time, and this will nourish my energy well.

Example 4:

My Ming Gua is Star 6, Metal. This year it is flying into the North Sector of Career & Life Purpose/Vocation which is a Star 1 Water area. I can use this to promote more focus on my life's purpose, or to gain promotion in my field of work. As Metal nourishes Water I realise that this year may take a lot of energy out of me as I strive towards achievements. Because of this I can research some energy boosting techniques for diet and stress release so that I can manage the workload. I can also add a little more Metal Element to the area of the North and consider setting up a space for study and work to take advantage of the energy naturally pooling here.

Also, my Ming Gua 6 Metal is naturally at home in the NE, which has

the Star 2 Earth visiting this year. This means that my energy is nourished by the Earth Element of Star 2. This combination bodes well for the work that I am assuming will come my way during the year.

These brief examples will help you apply the method to your own Ming Gua using the Annual Influences Chart in the AIG. If you still require assistance please contact me directly from the website's [Contact](#) page.



About Me

I'm a passionate observer of energy in all ways. Feng Shui was a natural extension of this interest and to me is entwined with all aspects of Life. It is no surprise that once I found myself taking notice of my possessions and the placement of them in my home I also began to see that I was taking notice of other things about my life in detail too. This had me examining my thoughts, feelings, eating habits, behaviours, relationships, knowledge and the concept of my Life's Purpose. Seeing all these layers of observations can be overwhelming, and it was not until I was digesting the knowledge of Flying Stars that I came to understand the value of Timing.

With peaceful and diligent attention, all problems or perceived obstacles can be solved or removed. This is the gift of contemplation I believe.

I've been augmenting my life to follow more natural and organic approaches for many years now and with these changes I've established good health and harmony in several life aspects that needed attention. Physical and emotional health being the primary sources of concern for me at the start of this journey and now they are the primary source of strength.

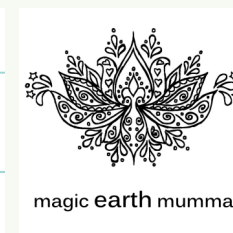
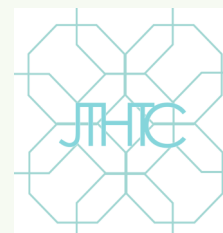
Holistic Therapy Connections began in 2006 with the completion of my Holistic Feng Shui Practitioner training course via The Institute of Holistic Feng Shui on the Gold Coast in Queensland, Australia. My consultancy has completed FS Assessments for homes and businesses in SE Qld, NSW, Victoria, the USA and UK. I love that with the right tools, knowledge and observations I can help people no matter where they are in the world.

As a project and passion, I began a sister business called Magic Earth Mumma, preparing aromatherapy alchemy and wellness products. Please take a look via the website www.magicearthmumma.com for all kinds of health & harmony products including space clearing and personal care

products. I have four wonderful children who fill our life and we home-educate them in a natural learning style. Life is full, busy and always evolving!

Blessings

Jannette



Want to know more?

Four easy to follow Study Manuals to take you through from Beginner to Advanced Flying Stars Feng Shui.

Available to order separately for \$35.00AUD each

www.MagicEarthMumma.com

Manuals are an ebook in pdf format sent direct to your email address.

Email support is always available to you throughout your study, no matter how long it takes you.

Consultations are available by appointment and I would love the opportunity to complete a Holistic Feng Shui Assessment for you and your property.

Jannette Tibbs, Senior Holistic Feng Shui Practitioner

